

An IDE is an application that can be used to develop software and can often support different languages.



Tool= \_\_\_\_\_  
Features= They are imported at the beginning of a program  
\_\_\_\_\_  
\_\_\_\_\_



Tool= Linker  
Features= \_\_\_\_\_  
\_\_\_\_\_  
\_\_\_\_\_



Tool= \_\_\_\_\_  
Features= Used to \_\_\_\_\_ errors and can provide  
\_\_\_\_\_  
\_\_\_\_\_

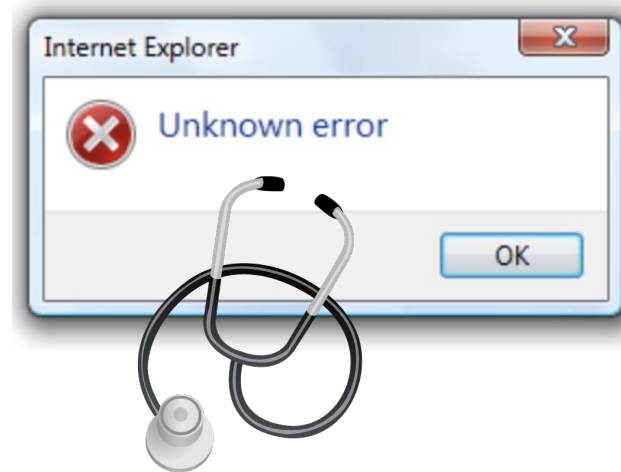


Tool= \_\_\_\_\_  
Features= Loads executable code into memory



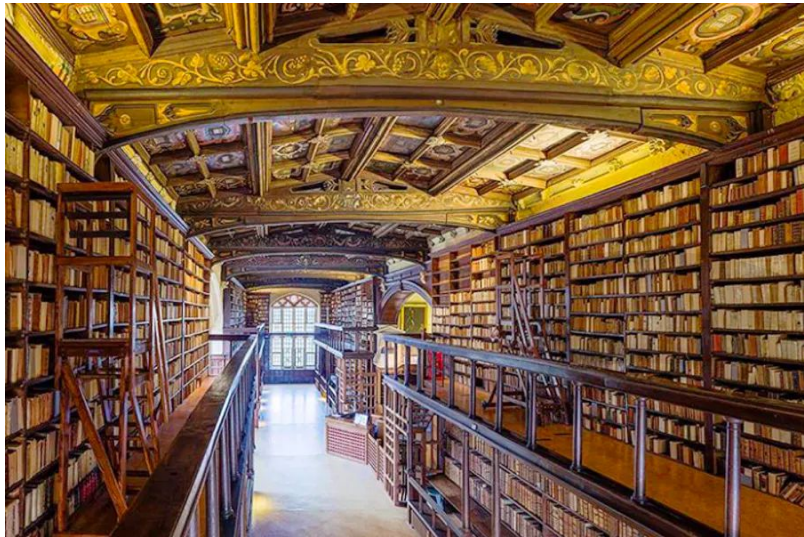
VAR

Tool= \_\_\_\_\_  
Features= A way to inspect variables and their  
\_\_\_\_\_  
\_\_\_\_\_



Tool= Error diagnostic  
Features= \_\_\_\_\_  
\_\_\_\_\_  
\_\_\_\_\_

An IDE is an application that can be used to develop software and can often support different languages.



Tool= \_\_\_\_\_

Features= They are imported at the beginning of a program

\_\_\_\_\_  
\_\_\_\_\_



Tool= \_\_\_\_\_

Features= Combines one or more object files for execution



Tool= Debugger

Features= \_\_\_\_\_

\_\_\_\_\_  
\_\_\_\_\_



Tool= Loader

Features= \_\_\_\_\_

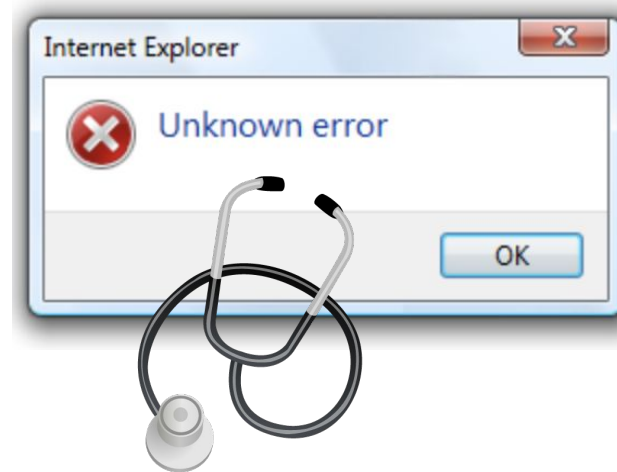
\_\_\_\_\_  
\_\_\_\_\_



Tool= \_\_\_\_\_

Features= \_\_\_\_\_

\_\_\_\_\_  
\_\_\_\_\_



Tool= \_\_\_\_\_ diagnostic

Features= \_\_\_\_\_

\_\_\_\_\_  
\_\_\_\_\_

Software Development Environments (IDE) provide programmers with various tools that are needed to develop computer programs. Identify **five** tools and explain how these tools are used during the development of a computer program. [12 QWC]

**Quality of written communication will be assessed in this question.**

.....

.....

.....

.....

.....

.....

.....

.....

.....

.....

.....

.....

.....

.....

.....

.....

.....

.....

.....

SHIPS