



**DYFODOL
DISGLAIR
BRIGHTER
FUTURES**



Crime Scene Investigator

More information can be found at
[Crime Scene Investigator \(gov.wales\)](https://gov.wales/crime-scene-investigator)



Gyrfa Cymru
Careers Wales



Qualifications Required

Qualifications required for this job vary between forces. They can range from a few GCSEs at grade C/4 or above (often including English, maths and science-based subjects) to A levels and, increasingly, many applicants have a degree.

Other qualifications might be accepted, for example vocational qualifications, or the International Baccalaureate Diploma.

Photographic qualifications and/or experience are also considered, as are applicants with scientific or technical backgrounds and/or qualifications. A driving licence is essential.

For entry to a degree course, the usual requirement is:

- 2/3 A levels
- GCSEs at grade C/4 or above in 2/3 other subjects

However, course requirements vary so check college/university websites very carefully.

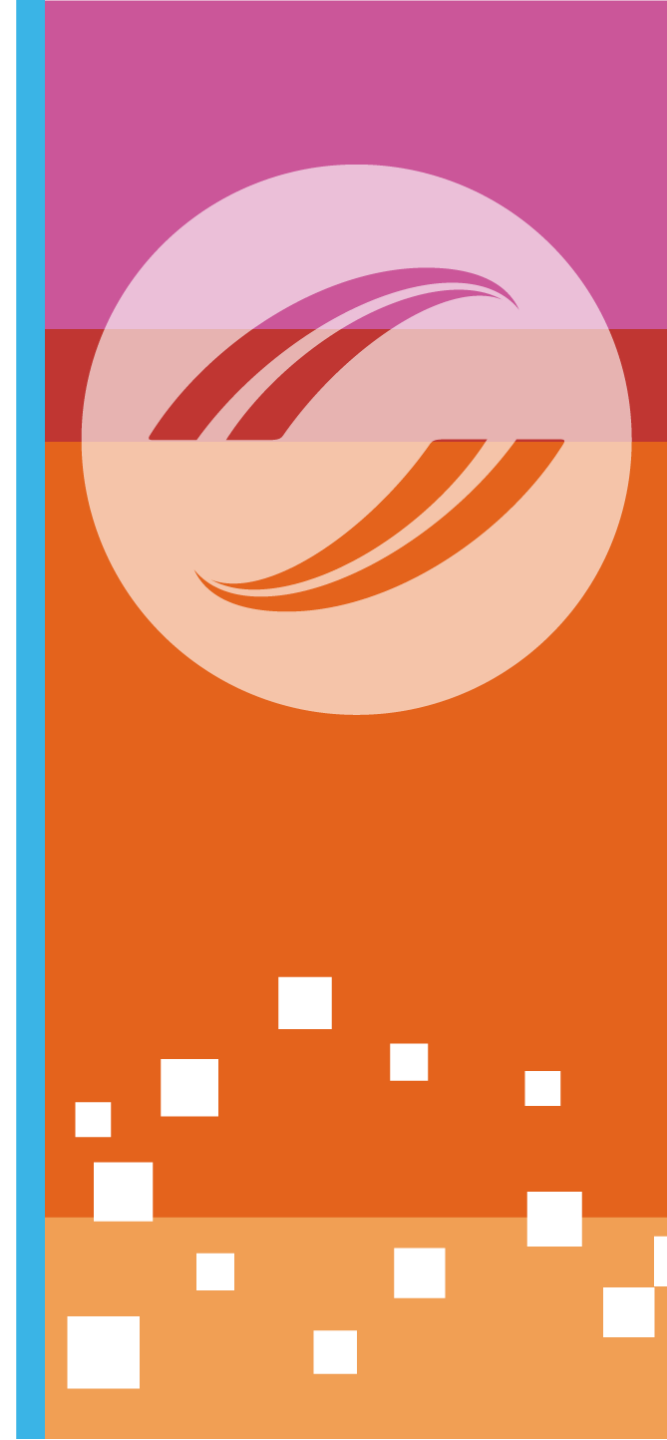
Some universities accept the Advanced Welsh Baccalaureate as equivalent to 1 A level



Skills and Qualities

To become a Crime Scene Investigator, you'll need to be:

- patient, understanding and sympathetic when dealing with the victims of crime
- calm and confident
- able to analyse situations carefully
- prepared to attend incidents that could be very distressing
- able to work in unpleasant or dirty conditions, for example, outdoors in all types of weather, at night or at the scene of a major incident
- observant, methodical and able to follow set procedures, paying close attention to detail
- able to use your initiative
- able to work on your own and as a member of a team
- flexible; for example, to cope with unusual work patterns
- able to use your hands to carry out small and detailed tasks



Entry Routes

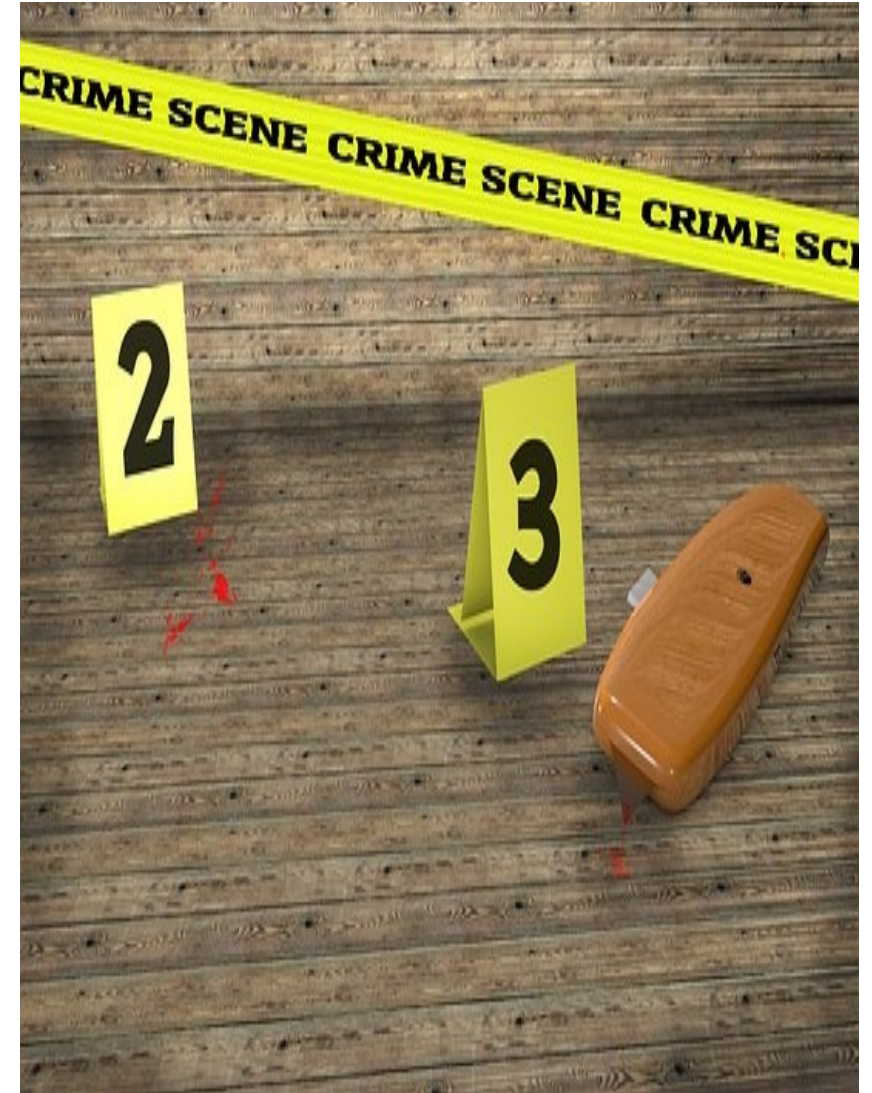
Direct entry is not widely available and in practice most entrants have some relevant experience and, often, a relevant degree.

In many areas, it is usual to enter as an Assistant Crime Scene Investigator and progress to a Crime Scene Investigator post after gaining experience, depending on available promotion opportunities.

You might be able to enter directly by applying for a trainee post with a police service.

Applicants usually have to pass eyesight and colour vision tests to be accepted for entry.

A small number of universities offer either a degree or foundation degree in crime scene science or forensic investigation.

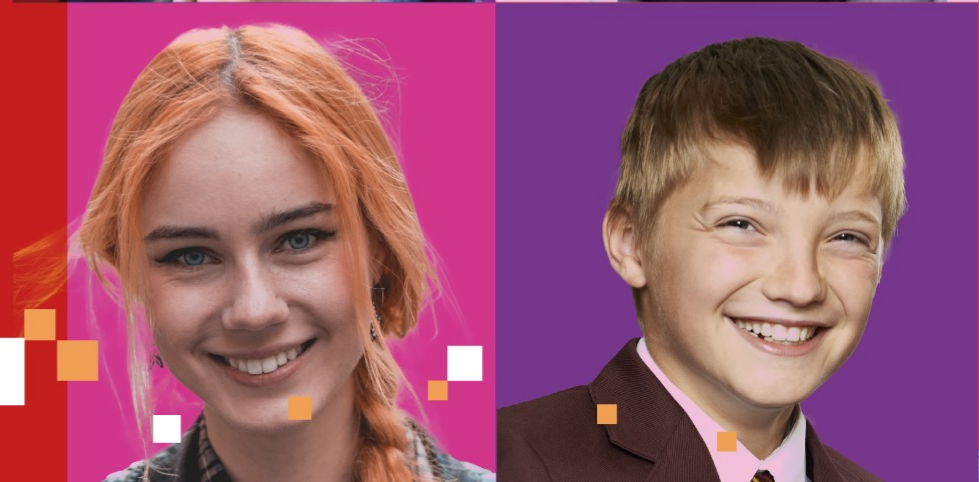


Salary

The pay rates given below are approximate.

- Starting: £23,000 - £26,000
- With experience: £26,000 - £35,000
- Senior Crime Scene Investigators earn £35,000 - £40,000

You may also be required to work shift patterns which include nights and weekends



**For more information please use
the QR code**



For entry to the Sixth Form, some schools require that students need 5 A*-C at GCSE such as:

Criminology

- C in GCSE English

Psychology

- B in double or triple science
- C in humanities GCSE
- C English
- B Maths Higher Tier

Chemistry

- BB (Higher) Double,
- BBB (Higher) Triple,
- B English Lang,
- B Maths

Biology

- BB (Higher) Double,
- BBB (Higher), Triple,
- B English Lang,
- B Maths
- BBB (Higher), Triple,

Medical Science

- CC Double
- CCC Triple
- C English Language
- C Maths

Psychology

- B in double or triple science
- C in humanities GCSE
- C English
- B Maths Higher Tier

Sociology

- C English language
- 4 other C+ Grades



For more information or help with your career planning

Please Contact your school-based careers adviser

Deb Smith
Careers Adviser
Careers Wales
Mobile: 07890 274896

E-mail: deb.smith@careerswales.gov.wales



For more information or help with your career planning

Please Contact your school-based careers adviser

David Jones Careers Adviser

david.jones@careerswales.gov.wales

Direct Number: 02920 84 6691

Mobile: 7827991532

