



**DYFODOL
DISGLAIR
BRIGHTER
FUTURES**



Solicitor

More information can be found at
[Solicitor | Job Information \(gov.wales\)](https://gov.wales/job-information/solicitor)



Gyrfa Cymru
Careers Wales



Qualifications Required

Degree, NVQ 6

To enter a degree course in law you usually need:

- At least 5 GCSEs at grade C, including English and maths
- 3 A levels

Vocational qualifications, the International Baccalaureate Diploma and the Welsh Baccalaureate are often acceptable as alternatives to A levels. There is strong competition for places on legal courses and successful applicants usually have high A level grades.

Some universities may require applicants to pass the Law National Aptitude Test (LNAT). Check university websites carefully for specific requirements.

CILEX

There are no formal entry requirements. As the qualifications are at Level 3 and above, CILEX recommends a minimum of four GCSEs at grades C or above (including English Language or Literature) or equivalent.



Apprenticeships

Apprenticeships

Employers will have their own entry requirements, but you usually need:

- At least 5 GCSEs at grade C, including English and maths
- 3 A levels

and/or

- Relevant work experience
- Relevant Level 3 or 4 Higher Apprenticeship
- Paralegal or Legal Executive Apprenticeship
- Law Degree/Graduate Diploma in Law/Legal Practice Course



Skills and Qualities

To become a Solicitor, you'll need:

- An in-depth knowledge of law
- Research and problem-solving skills
- Communication skills, written and oral
- To be able to understand complex information and arguments
- The ability to use concise, plain English to explain things to clients and write documents
- Organisation skills to plan and prioritise cases, which you may have to take on at short notice
- The ability to work well under pressure
- Listening skills and to know how to ask the right questions to find out more about a client's situation
- Commitment as training requires a lot of effort and resource
- Numeracy skills - the ability to understand financial statements and interpret accounts
- Commercial awareness
- To be able to present cases clearly and with confidence
- The confidence to argue cases persuasively
- IT skills

For those Solicitors specialising in European law, good knowledge of a foreign language is essential.

As an independent (self-employed) Lawyer, you must be able to manage your own business.



Entry Routes

There are three main routes to becoming a Solicitor:

- The graduate route
- The CILEX route
- The apprenticeship route
- [Solicitor - How to become | Job Information \(gov.wales\)](#)

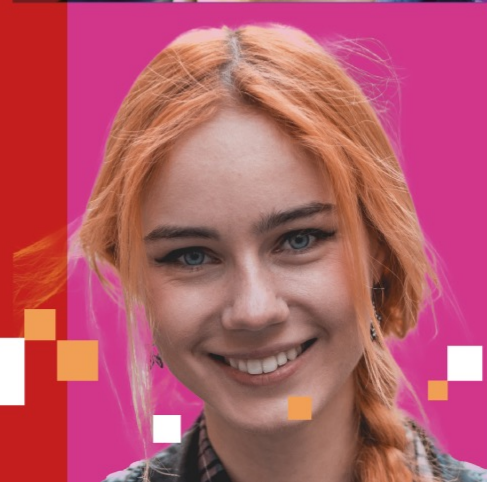


Salary

The pay rates given below are approximate.

- Starting: £28,000 - £45,000

- With experience: £50,000 - £130,000



**To find out more click on the QR code
below**



For entry to many schools Sixth Form, students need 5 A*-C at GCSE

These may prove to be beneficial:

Maths

Law

English/Welsh

Business

Economics

Religious studies



For more information or help with your career planning Please Contact

Deb Smith
Careers Adviser
Careers Wales
Mobile: 07890 274896

E-mail: deb.smith@careerswales.gov.wales



For more information or help with your career planning

David Jones Careers Adviser

david.jones@careerswales.gov.wales

Direct Number: 02920 84 6691

Mobile: 7827991532

