



**DYFODOL  
DISGLAIR  
BRIGHTER  
FUTURES**



# Counsellor

More information can be found at  
[Counsellor \(gov.wales\)](https://gov.wales/counsellor)



Gyrfa Cymru  
Careers Wales



# Qualifications Required

## **HNC/HND, NVQ 4 or 5 up to Degree, NVQ 6**

Accredited training courses are available at colleges and training providers across the UK.

Details of courses are on the websites of:

- the National Counselling Society
- the British Association for Counselling & Psychotherapy

Entry requirements vary. They are likely to include:

- evidence of the ability to study at this level
- some knowledge and experience of counselling or advice work

To prepare for a Diploma level course, some colleges offer introductory courses in counselling skills.

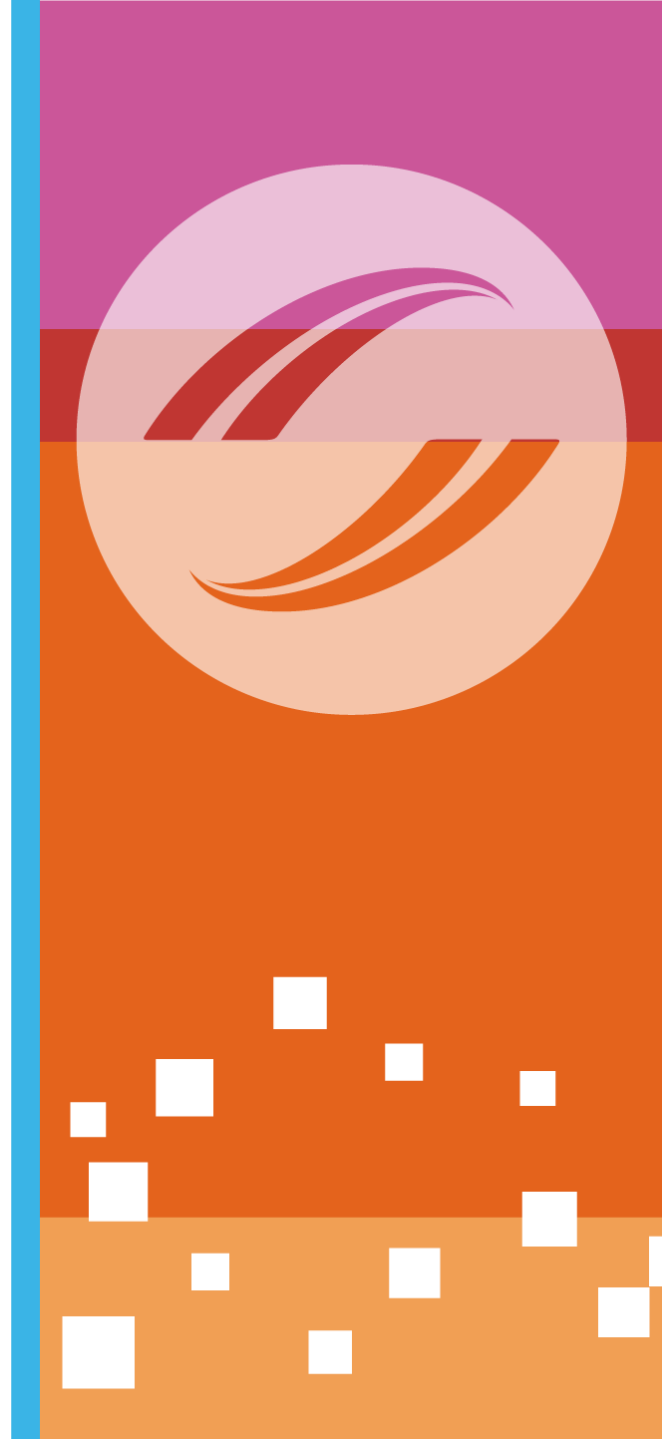
A vocational qualification in counselling skills could help you to stand out from the crowd.



# Skills and Qualities

To become a Counsellor, you will need:

- an investigative mind
- a strong interest in the way people think and act
- a logical and methodical approach to problem solving
- excellent communication and interpersonal skills
- a calm, professional approach at all times
- strict respect for your clients' confidentiality



# Entry Routes

To become a Counsellor, you would usually need to have some previous work experience. which might include social work, advice and guidance, nursing or probation.

You will also need to have some life experience, which could include dealing with issues such as bereavement, substance misuse, relationship or health issues. It is not essential to have actually experienced any or all of these conditions yourself; but, as a Counsellor, you will need to be able to understand how they affect people.

The Counselling and Psychotherapy Central Awarding Body offers several routes into counselling, including courses from level 2 - 6.

These training courses will include face-to-face training and practical counselling experience.



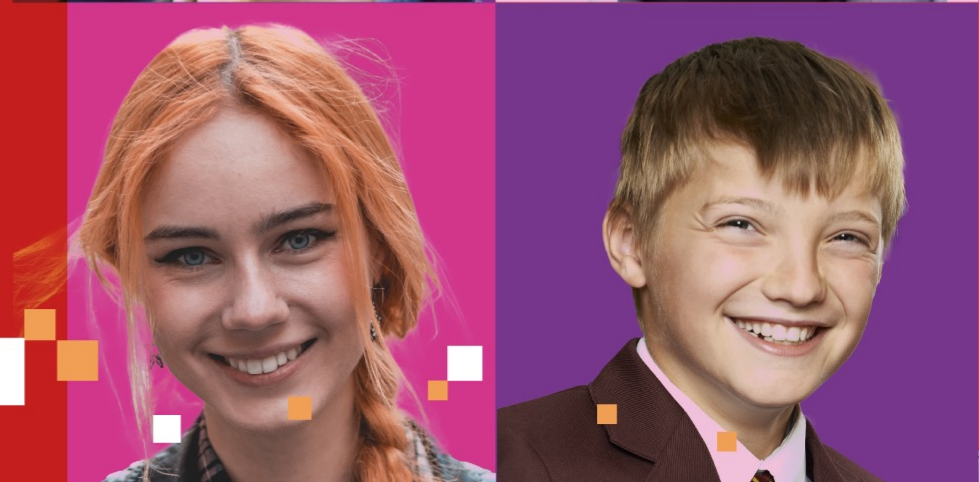


# Salary

The pay rates given below are approximate.

- Starting: £22,000
- 
- With experience: £24,000 - £26,500

Counsellors who are paid per session usually charge between £30 - £50 an hour.



**For more information please use the QR code**



**For entry to the Sixth Form, some schools require that students need 5 A\*-C at GCSE.**

Studying most A-level qualification is considered beneficial.





# For more information or help with your career planning

Please Contact your school-based careers adviser

**Deb Smith**

Careers Adviser

Careers Wales

Mobile: 07890 274896

E-mail: [deb.smith@careerswales.gov.wales](mailto:deb.smith@careerswales.gov.wales)





# For more information or help with your career planning

Please Contact your school-based careers adviser

**David Jones** Careers Adviser

[david.jones@careerswales.gov.wales](mailto:david.jones@careerswales.gov.wales)

**Direct Number:** 02920 84 6691

**Mobile:** 7827991532

