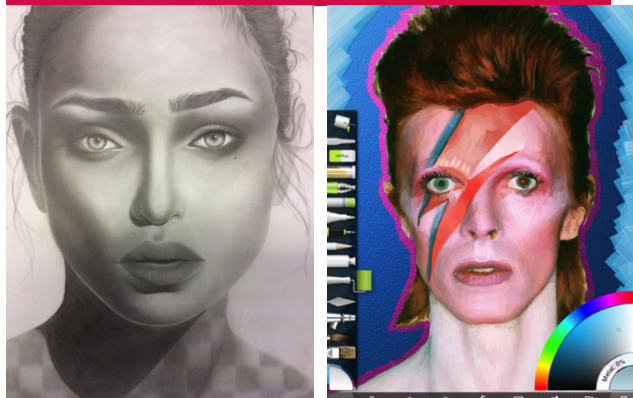


**ART  
Celf**

Course Title: Art, Craft and Design  
Examination Board: WJEC  
Qualification: GCSE



**COURSE OUTLINE**

The WJEC Specification course is over two years, during which you will complete one unit and an exam.

**UNIT 1: PORTFOLIO (worth 60%)**

You will be given the theme 'IDENTITY' and you can develop the theme through religion/family/personal event/nationality/traditions/self image/hobbies.

Your sketchbook should demonstrate different processes developed from different starting points and the final pieces will demonstrate your knowledge, understanding and skills based on various workshops.

You will be given the opportunity to experiment with a wide range of medias and processes e.g. painting, drawing, printing, mixed media, sculpture, glass, ICT, movies.

**EXAM: Theme TBC (worth 40%)**

The controlled test is set by the exam board and consists of two stages - preparation and examination. Preparation starts with choosing a question from the exam paper followed by 8 weeks research and experimentation leading to a 10 hour exam. During the 10 hours, under exam conditions, you will produce your final piece.

**HOW WILL THE COURSE BE ASSESSED?**

There are four Assessment Objectives, each worth 25%

- AO1 - Critical Understanding
- AO2 - Creative Marketing
- AO3 - Reflective Recording
- AO4 - Personal Presentation

**CAREER OPPORTUNITIES AND PROGRESSION**

Career prospects for the Artist / Designer / Craftworker are broad and varied. These are some of the careers which make use of Art Education:

Advertising, Animation, Architecture, Graphics, Cosmetics, Fashion, Film & TV, Journalist, Photography, Painter, Sculptor, Teacher

Art at GCSE is an exciting but time consuming course giving you an opportunity to develop your creative skills and learn new techniques - for further information please see the school website and click on Art Department and Media Gallery.

For further information please contact:  
Ms S Morris - Head of Art

painting mixed media sculpture animation