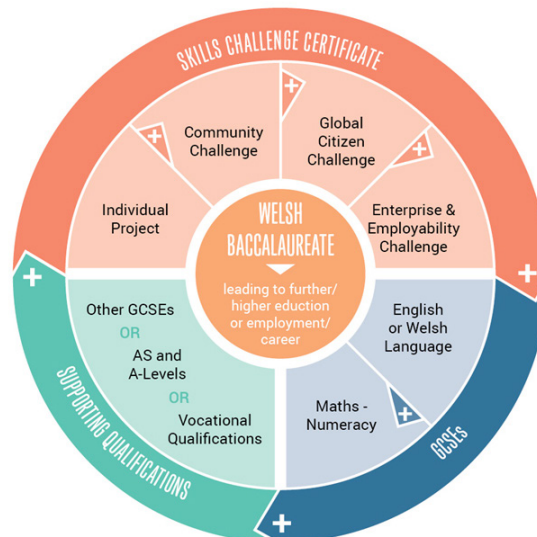




Head of Department: Mrs J Moriarty
Examination Board: WJEC



COURSE OUTLINE

WHY STUDY WBQ AT NATIONAL LEVEL?

The central focus of the National (post-16) Welsh Baccalaureate is to provide a vehicle for level 2 post-16 learners to consolidate and develop essential and employability skills within the context of their chosen Learning Programme.

The Welsh Baccalaureate will encourage the learner to value skills development as a key aspect of education and life-long learning. Offering a learning experience relevant to the needs and demands of the workplace will develop learners' confidence, drive and initiative, preparing them to enter, succeed and progress in the world of work. Through the Welsh Baccalaureate learners will raise their skills levels and confidence, enabling and empowering them to take their place as responsible and active citizens within a diverse society. Alongside and through the development of skills, the Welsh Baccalaureate provides learners with the opportunity to develop their knowledge and understanding of society, the community in which they live and an awareness of global issues, events and perspectives. Learners will be required to consider how the application of their learning may impact on individuals, employers, society and the environment.

STRUCTURE OF COURSE:

The Welsh Baccalaureate is based on a Skills Challenge Certificate, which is worth 1 GCSE alongside Supporting Qualifications. The requirements of both the Skills Challenge Certificate and Supporting Qualifications

must be met in order to achieve the overarching Welsh Baccalaureate. The Skills Challenge Certificate consists of four components which are followed by all learners:

- Individual Project
- Enterprise and Employability Challenge
- Global Citizenship Challenge
- Community Challenge

The Supporting Qualifications include two mandatory GCSEs of English Language or Welsh Language together with Mathematics-Numeracy at grade A*- C which may have been achieved previously. During the course a learner must achieve 3 other Level 2 qualifications, 2 of which can be vocational qualifications.

The focus of the Skills Challenge Certificate will be on the essential and employability skills young people need in their future lives and these skills will be developed and assessed through an Individual Project and three Challenges. The Skills Challenge Certificate has been designed to include learning and assessment which will enthuse, engage and motivate learners in the classroom, the workplace and the wider community. The qualification has been devised around the concept of a 'plan, do, and review' approach to learning where learners are introduced to a context for learning, plan activities, carry out activities, review outcomes and learning. Challenges are individually evidenced and assessed through a Candidate Portfolio.

Head of Department: Mrs J Moriarty
Examination Board: WJEC

**WELSH BACCALAUREATE
NATIONAL
Cymhwyster Bagloriaeth Cymru**

Skills Challenge Certificate components	Weighting	Assessed Skills	Internal Assessment	External Moderation
Individual Project	50%	<ul style="list-style-type: none"> • Planning and Organisation • Critical Thinking and Problem Solving • Digital Literacy 		
Enterprise and Employability Challenge	20%	<ul style="list-style-type: none"> • Creativity and Innovation • Personal Effectiveness • Digital Literacy 		
Global Citizenship Challenge	15%	<ul style="list-style-type: none"> • Critical Thinking and Problem Solving • Creativity and Innovation 		
Community Challenge	15%	<ul style="list-style-type: none"> • Planning and Organisation • Personal Effectiveness 		

WHAT ARE THE REQUIREMENTS

As shown in the diagram (*above left*), to achieve the Welsh Baccalaureate, learners will need to complete:

1. SKILLS CHALLENGE CERTIFICATE (worth 1 GCSE)

- Individual Project

This is an independent, research-based assignment on an individually selected subject. Learners demonstrate the knowledge and skills to produce a written investigation or an artefact/product supported by written research.

- Enterprise and Employability Challenge

For learners to develop enterprising skills and attributes and enhance employability.

- Global Citizenship Challenge

For learners to understand and respond appropriately to a global issue.

- Community Challenge

For learners to identify, develop and participate in opportunities that will benefit the community.

2. GCSE'S

GCSE English Language or Welsh Language and GCSE Mathematics – Numeracy.

3. Supporting qualifications

For example, other GCSEs; A levels/AS qualifications; vocational qualifications (see www.wjec.co.uk for specific requirements for each level).

To achieve the National Welsh Baccalaureate learners must achieve the National Skills Challenge Certificate together with the following Supporting Qualifications:

- GCSE English Language or GCSE Welsh Language at grade A* - C;
- GCSE Mathematics – Numeracy at grade A* - C;
- A minimum of three further GCSEs grade A* - C, of which two may vocational qualifications.

For further information please contact:
Mrs J Moriarty, Head of WBQ