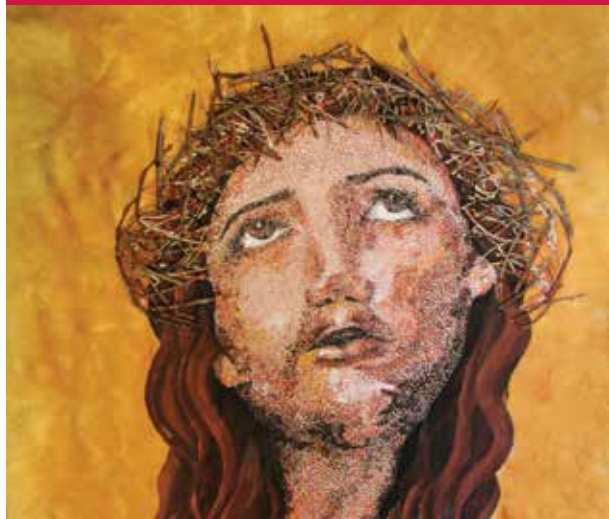


ART & DESIGN
AS Level (Fine Art)



Head of Department: Miss S Morris

Teachers: Miss S Morris

Examination Board: WJEC



Course Outline

The new AS specification is known as 'Personal Creative Enquiry' and it is worth 40% of the overall A Level qualification. The 'Personal Creative Enquiry' consists of an extended exploratory project / portfolio and outcomes based on themes and subject matter which are personal and meaningful to you. The Enquiry must integrate critical, practical and theoretical work. This involves a single coursework unit which provides more time for you to acquire foundational skills, knowledge and understanding in the earlier part of the course.

The unit has no set theme therefore you can choose which avenue to pursue. Your sketchbook should demonstrate different processes developed from different starting points, and the final outcomes will demonstrate your knowledge, understanding and skills based on various workshops. The importance of drawings in its widest sense as a recording tool and means of exploring visual language is emphasised in the new subject content. Your sketchbooks will record observations, interests, skills and experiments indicating personal development whilst covering the four Assessment Objectives.

Entry Requirements

You will be embarking on a new exciting Fine Art course. This builds on a broad range of skills covered at GCSE e.g. knowledge and understanding, imagination, creativity, ICT skills, communication, practical techniques, self-confidence, aesthetic appreciation, analytical reasoning.

What Will I Study

Through various workshops during the first half term, you will learn the techniques and processes associated with each media e.g. drawing, printmaking, sculpture, ceramics, ICT, plaster cast, wire, wax, latex, glass, pewter casting, felt making etc.

How Will I Be Assessed

In May your 'Personal Creative Enquiry' unit will be marked by the Art Department staff. There are four equally weighed sections; Contextual Understanding, Creative Making, Reflective Recording and Personal Presentation. Your marks are submitted to the exam board who then select ten samples from the entries for external moderation.

oilpainting sculpture painting mixedmedia animation film
glassprints photography watercolour wire tapestry drawing

Head of Department: Miss S Morris
 Teachers: Miss S Morris
 Examination Board: WJEC

ART & DESIGN
A2 Level (Fine Art)



Course Outline

The new A Level specification is split into two parts – coursework which is known as ‘Personal Investigation’ (worth 36%) and the exam which is known as ‘Externally Set Assignment’ (worth 24%) of the qualification.

PERSONAL INVESTIGATION

This unit consists of an extended major critical, practical and theoretical project / portfolio and outcomes based on themes and subject matter that have a personal significance. An extended written element of 1000 – 3000 words is also a requirement; this document may contain images and texts, and must clearly relate to the practical and theoretical work using an appropriate working vocabulary and specialist terminology.

The unit has no set theme therefore you can choose which avenue to pursue. Your sketchbook should demonstrate different processes developed from different starting points, and the final outcomes will demonstrate your knowledge, understanding and skills based on previous workshops. The importance of drawings in its widest sense as a recording tool and means of exploring visual language is emphasised. Your sketchbooks will record observations, interests, skills and experiments indicating personal development whilst covering the four Assessment Objectives.

EXTERNALLY SET ASSIGNMENT

For this unit you need to choose one of the exam stimuli as a starting point from which to elicit a personal response. Your responses should take the form of critical, practical and theoretical preparatory work / supporting studies which inform the resolution of ideas in the fifteen hour sustained focus study.

Entry Requirements

A good grade as AS Level will give you a sound basis for a successful A Level grade.

What Will I Study?

Through various workshops you will learn the techniques and processes associated with each media e.g. mixed media, ceramics, large scale painting, installation, new media etc.

How Will I Be Assessed?

In May your ‘Personal Investigation’ and ‘Externally Set Assignment’ units will be marked by the Art Department staff. Both units are marked against the same criteria, which consists of four equally weighed sections; Contextual Understanding, Creative Making, Reflective Recording and Personal Presentation. Your marks are submitted to the exam board who then select ten samples from the entries for external moderation.

Career Opportunities And Progression

On completing A Level Art, the majority of students who opt to further their Art and Design education will follow a Foundation Course before progressing to a specialist Art and Design degree.

Studying Art and Design can provide the foundation for a successful future. In fact, Art related occupations represent the UK's second highest employment sector e.g. Fashion, Advertising, Web Design, Illustration, Animation, Graphic Design, Interior Design, Landscape Design, Architecture, Theatrical Design, Television, Film or Photography, to name only a few career options.